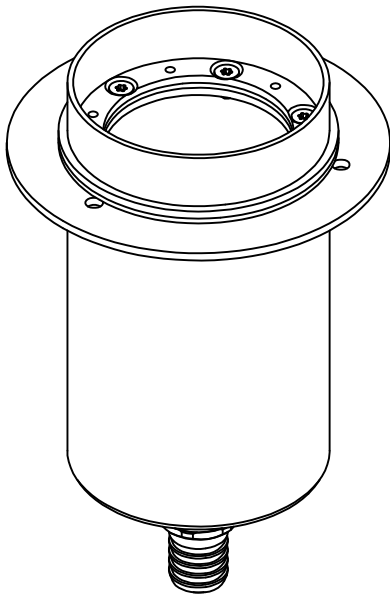
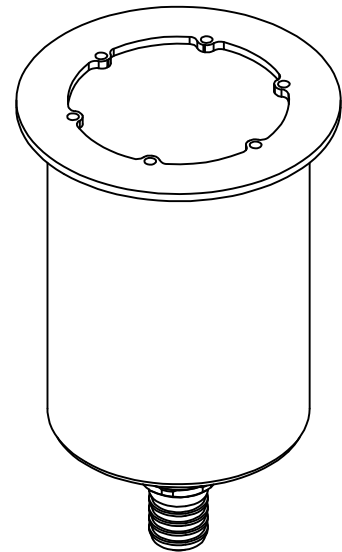


# ARPOOL M / ARPOOL CORAL INSTALLATION INSTRUCTIONS (HOUSING)

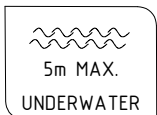
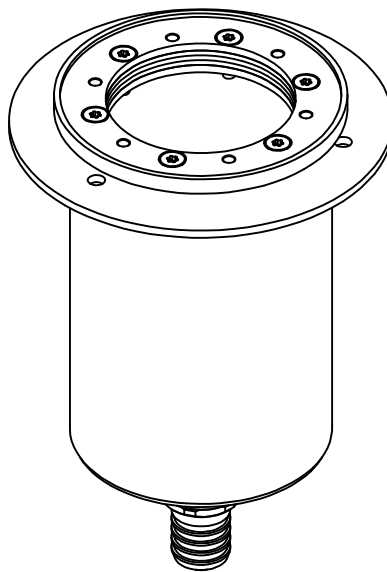
CONCRETE



STAINLESS STEEL



LINER



5m MAX.

UNDERWATER

IP68

AISI316L



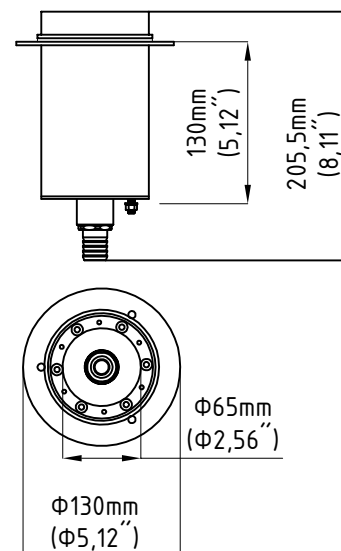
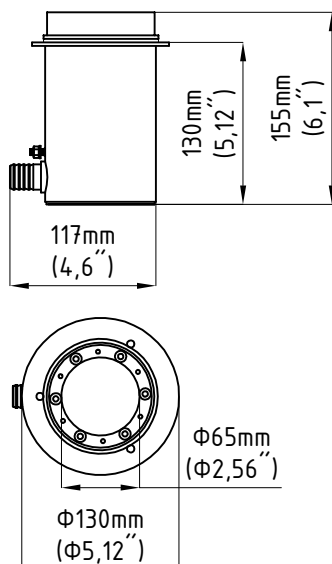
ALL DIMENSIONS ARE GIVEN ACCORDING TO THE SI SYSTEM OF UNITS (MM, KG, °C), ADDITIONAL DIMENSIONS THAT ARE WRITTEN IN BRACKETS, ARE GIVEN ACCORDING TO THE U.S. MEASUREMENT SYSTEM (IN, LBS, °F)

## GENERAL REMARKS ON SAFETY

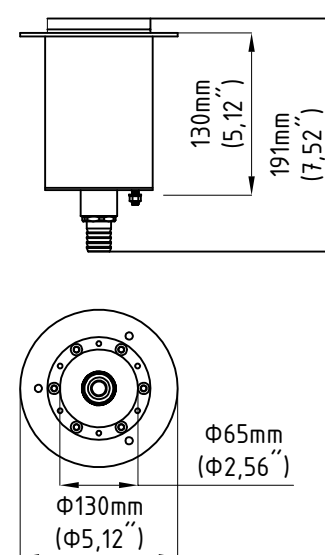
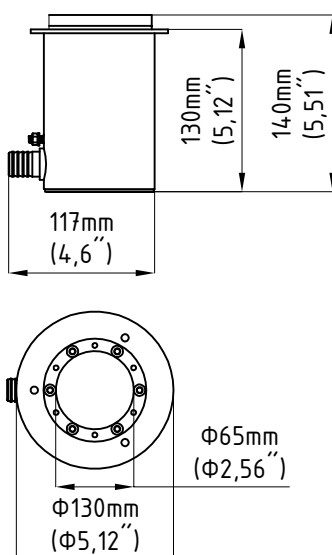
- READ ALL OF THESE INSTRUCTIONS BEFORE INSTALLING THE HOUSING.
- KEEP ALL OF THE INSTRUCTIONS FOR FUTURE REFERENCE.
- INSTALLATION IS TO BE PERFORMED BY A QUALIFIED CONTRACTOR.
- ALL INSTALLATIONS ARE TO CONFORM TO THE STANDARDS OF THE NATIONAL ELECTRICAL CODE AS WELL AS ALL LOCAL JURISDICTIONAL CODES AND REGULATIONS.
- THE MANUFACTURER ACCEPTS NO RESPONSIBILITY FOR DAMAGE TO PERSONS OR PROPERTY ARISING THROUGH IMPROPER USE OR INSTALLATION.
- HOUSINGS' SURFACES EXPOSED TO THE EFFECTS OF WATER (INCLUDING WATER CONTAINING CHLORINE) ARE MADE OUT OF AISI316L STAINLESS STEEL. AISI316L IS SUITABLE FOR THIS USE AND WILL PREVENT CORROSION UP TO LEVEL OF 1000 PPM OF CHLORINE IN WATER AND UP TO WATER pH LEVEL OF 7.
- FOR WARRANTY CONDITIONS PLEASE CONSULT LOCAL SALES REPRESENTATIVE

## HOUSING DIMENSIONS

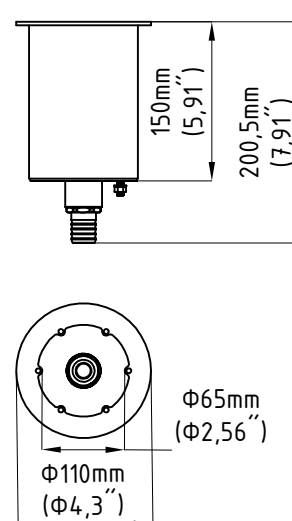
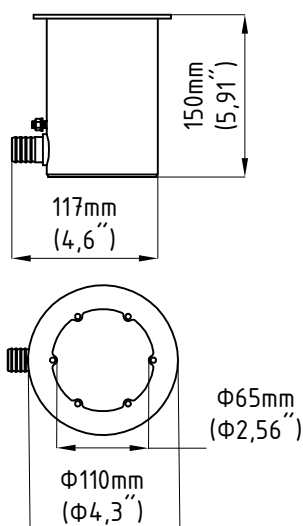
### CONCRETE POOL HOUSING



### LINER POOL HOUSING



### STAINLESS STEEL POOL HOUSING

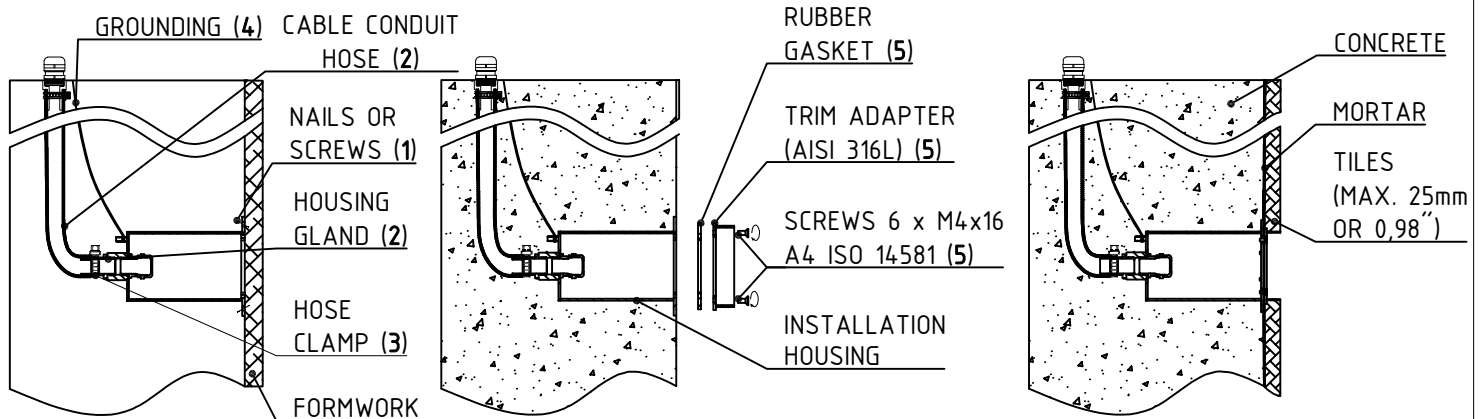


## CONCRETE POOL HOUSING

1. ATTACH THE ARPOOL INSTALLATION HOUSING TO THE FORMWORK WITH SCREWS OR NAILS (SCREWS/NAILS NOT SUPPLIED BY MANUFACTURER; SCREWS/NAILS SHALL BE MARINE GRADE STAINLESS STEEL (A4/AISI316L))
2. ROUTE THE CABLE CONDUIT HOSE TO THE DRY AREA WHERE THE POWER SUPPLY WILL BE LOCATED, AND ATTACH IT TO THE HOUSING GLAND (CONDUIT HOSE SUPPLIED BY MANUFACTURER)
3. FIX THE CABLE CONDUIT HOSE WITH THE HOSE CLAMP TO THE CABLE GLAND
4. GROUND THE HOUSING AND POUR CONCRETE (GROUNDING WIRE NOT SUPPLIED BY MANUFACTURER).
5. AFTER THE CONCRETE IS DRY AND WHEN THE FORMWORK IS REMOVED CUT THE EXCESS OF NAILS/SCREWS, THEN PLACE RUBBER GASKET AND TRIM ADAPTER ON THE INSTALLATION HOUSING AND FIX IT WITH SCREWS (SCREWS SUPPLIED BY MANUFACTURER M4X16 A4 / MARINE GRADE).
6. PUT MORTAR AND TILES

### IMPORTANT SUGGESTION:

USE DRILLING TEMPLATE AND HOUSING ORIENTATION GUIDE AS THIS WILL ENSURE PROPER HOUSING ORIENTATION  
IT IS ADVISED THAT THE THICKNESS OF TILE+MORTAR EQUALS THE THICKNESS OF TRIM ADAPTER AND RUBBER SEAL. IF THICKNESS WILL BE LESS THAN ADAPTER AND RUBBER SEAL THICKNESS HOUSING NEEDS TO BE MOUNTED DEEPER IN CONCRETE SHELL TO ENSURE PROPER INSTALLATION

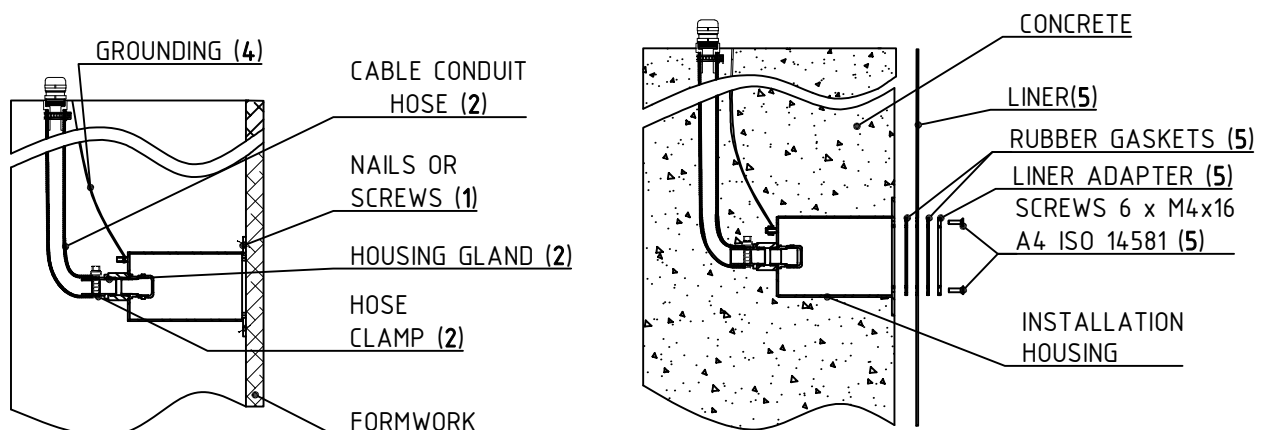


## LINER POOL HOUSING

1. ATTACH THE ARPOOL INSTALLATION HOUSING TO THE FORMWORK WITH SCREWS OR NAILS (SCREWS/NAILS NOT SUPPLIED BY MANUFACTURER; SCREWS/NAILS SHALL BE MADE OUT OF MARINE GRADE STAINLESS STEEL (A4/AISI316L))
2. ROUTE THE CABLE CONDUIT HOSE TO THE DRY AREA WHERE POWER SUPPLY WILL BE LOCATED, AND ATTACH IT TO HOUSING GLAND (CONDUIT HOSE SUPPLIED BY MANUFACTURER)
3. FIX THE CABLE CONDUIT HOSE WITH THE CABLE CLAMP TO THE CABLE GLAND
4. GROUND THE HOUSING (GROUNDING WIRE NOT SUPPLIED BY MANUFACTURER)
5. AFTER THE CONCRETE POUR AND WHEN THE FORMWORK IS REMOVED CUT EXCESS OF NAILS/SCREWS. USE DRILLING TEMPLATE FROM THE MANUAL TO CUT THE LINER
6. PLACE FIRST RUBBER GASKET UNDER LINER AND THEN SECOND RUBBER GASKET WITH LINER ADAPTER ON LINER. ONCE PLACED FASTEN WITH SCREWS (SCREWS SUPPLIED BY MANUFACTURER M4X16 A4 / MARINE GRADE)

### IMPORTANT SUGGESTION:

USE DRILLING TEMPLATE AND HOUSING ORIENTATION GUIDE FROM THE MANUAL. GUIDE WILL ENSURE PROPER INSTALLATION HOUSING ORIENTATION

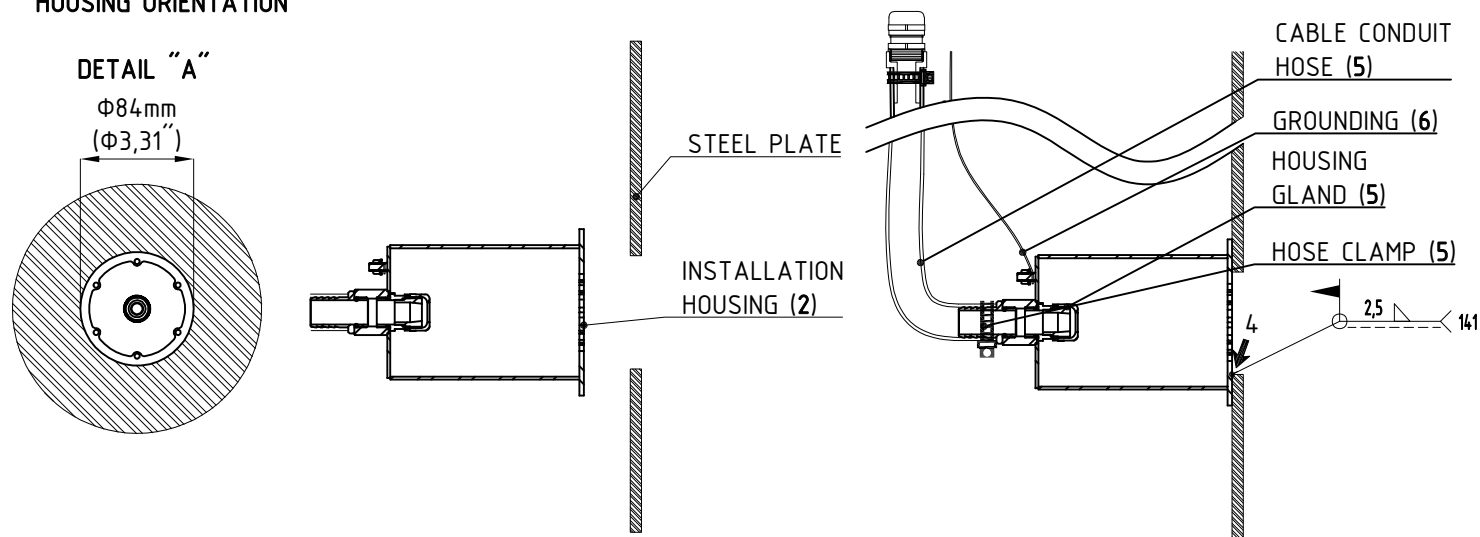


## STAINLESS STEEL POOL HOUSING

1. CUT STEEL SHEET FOR HOUSING MOUNT AS PER DETAIL "A" BELOW
2. PLACE THE HOUSING BEHIND THE STEEL SHEETING
3. FIX THE HOUSING TO THE STEEL SHEETING
4. WELD THE HOUSING TO THE STEEL SHEETING. WELDING PROCESS SHALL BE PERFORMED BY QUALIFIED PROFESSIONAL
5. ROUTE THE CABLE CONDUIT HOSE TO THE DRY AREA WHERE THE POWER SUPPLY WILL BE LOCATED, AND FIX THE CABLE CONDUIT HOSE WITH THE HOSE CLAMP TO THE CABLE GLAND (CONDUIT HOSE AND HOSE CLAMP SUPPLIED BY MANUFACTURER)
6. GROUND THE HOUSING (GROUNDING WIRE NOT SUPPLIED BY MANUFACTURER)

### IMPORTANT SUGGESTION:

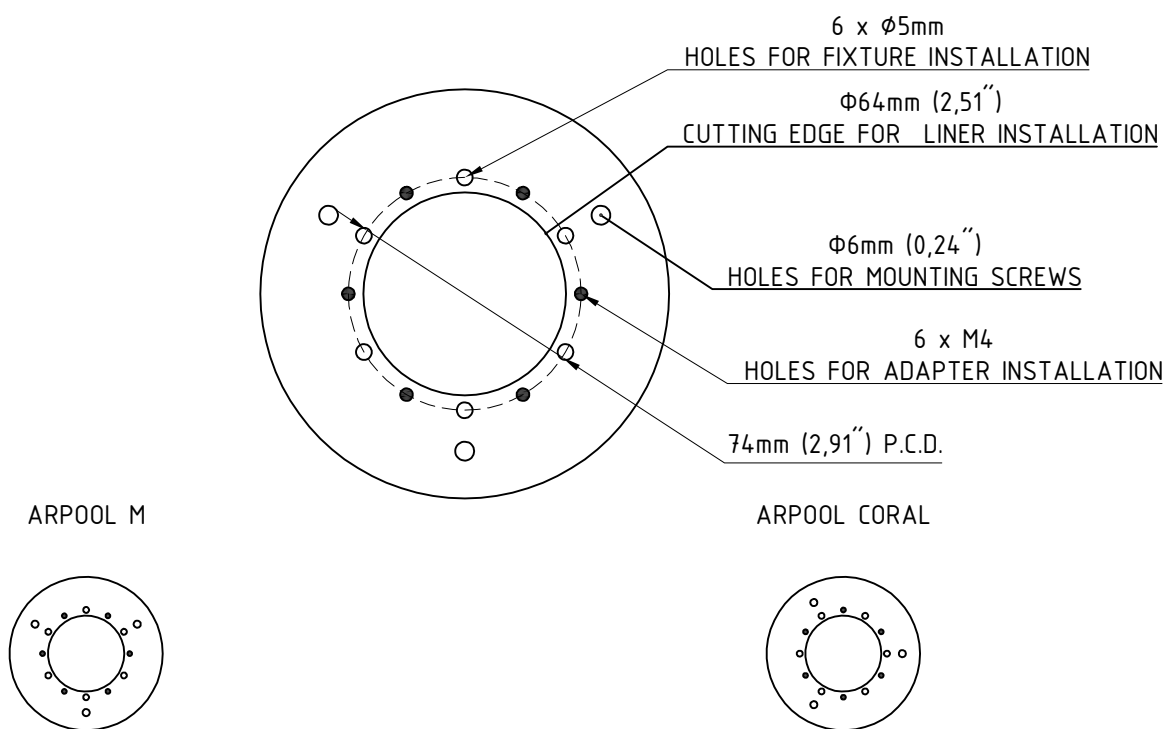
USE DRILLING TEMPLATE AND HOUSING ORIENTATION GUIDE FROM THE MANUAL. GUIDE WILL ENSURE PROPER INSTALLATION HOUSING ORIENTATION



## DRILLING TEMPLATE AND HOUSING ORIENTATION GUIDE

### NOTE:

DRAWING IS NOT IN 1:1 SCALE



FOR **ARPOOL M** INSTALLATION KEEP 5mm HOLES ON 12 AND 6 O'CLOCK (VERTICAL), AS THIS WILL ENSURE PROPER ORIENTATION OF LUMINAIRE

FOR **ARPOOL CORAL** INSTALLATION KEEP 5mm HOLES ON 3 AND 9 O'CLOCK (HORIZONTAL), AS THIS WILL ENSURE PROPER ORIENTATION OF LUMINAIRE