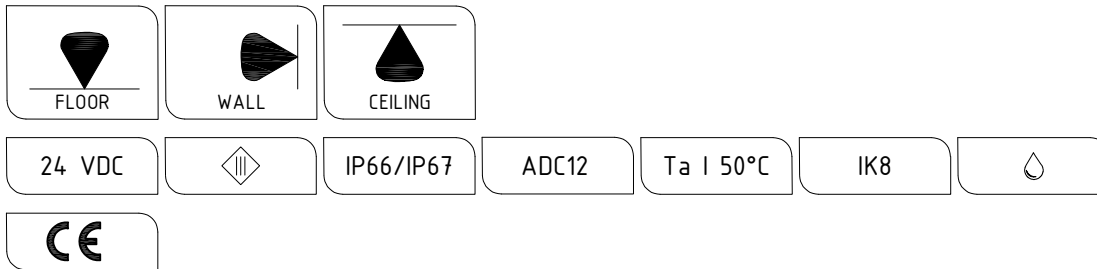
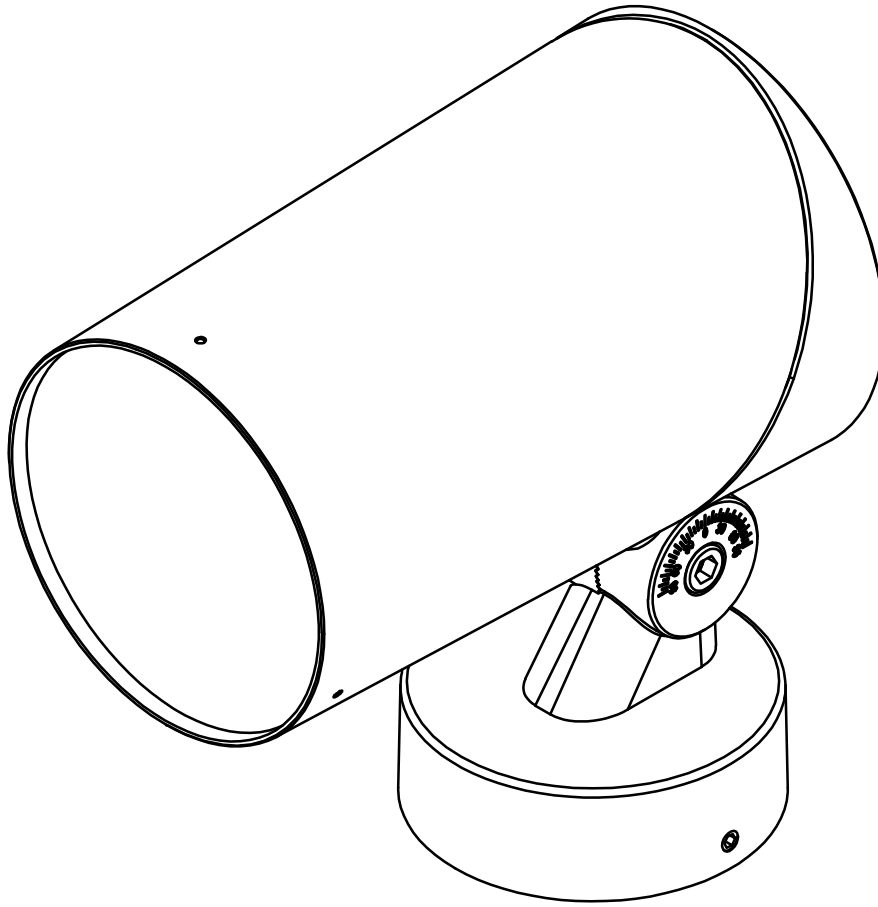


# FARO ROUND 100

## INSTALLATION INSTRUCTIONS (FIXTURE)



ALL DIMENSIONS ARE GIVEN ACCORDING TO THE SI SYSTEM OF UNITS (MM, KG, °C), ADDITIONAL DIMENSIONS THAT ARE WRITTEN IN BRACKETS, ARE GIVEN ACCORDING TO THE U.S. MEASUREMENT SYSTEM (IN, LBS, °F)

### GENERAL REMARKS ON SAFETY

- READ ALL OF THESE INSTRUCTIONS BEFORE INSTALLATION.
- KEEP ALL OF THE INSTRUCTIONS FOR FUTURE REFERENCE.
- INSTALLATION IS TO BE PERFORMED BY A QUALIFIED CONTRACTOR.
- ALL INSTALLATIONS ARE TO CONFORM TO THE STANDARDS OF THE NATIONAL ELECTRICAL CODE AS WELL AS ALL LOCAL JURISDICTIONAL CODES AND REGULATIONS.
- THE MANUFACTURER ACCEPTS NO RESPONSIBILITY FOR DAMAGE TO PERSONS OR PROPERTY ARISING THROUGH IMPROPER USE OR INSTALLATION.
- FOR WARRANTY CONDITIONS PLEASE CONSULT LOCAL SALES REPRESENTATIVE.

## WIRING

### WIRE MARKINGS

#### OPTION WITH SINGLE LED COLOR

- + BROWN WIRE
- BLUE WIRE

#### OPTION WITH TUNABLE WHITE COLOR

- + BROWN WIRE
- BLUE WIRE (4000K)
- YELLOW/GREEN WIRE (2200K)

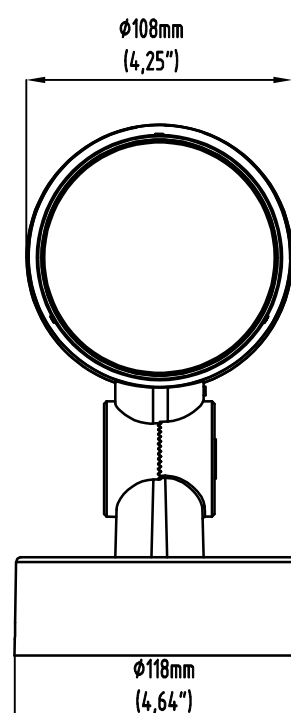
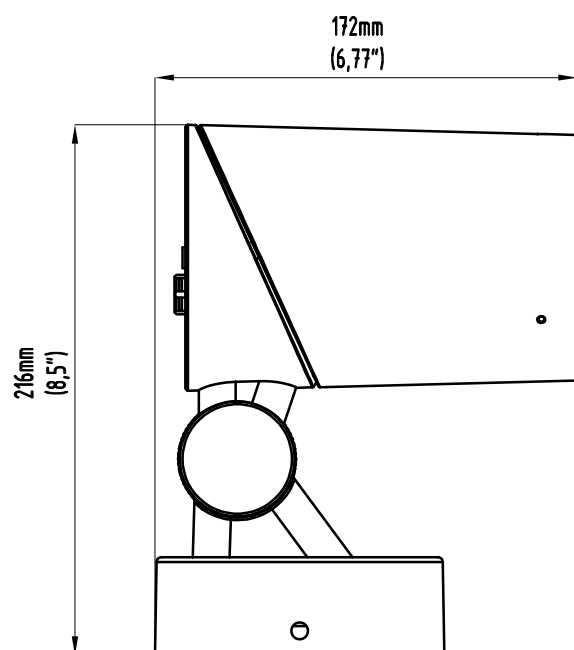
#### OPTION WITH RGBW LED COLOR

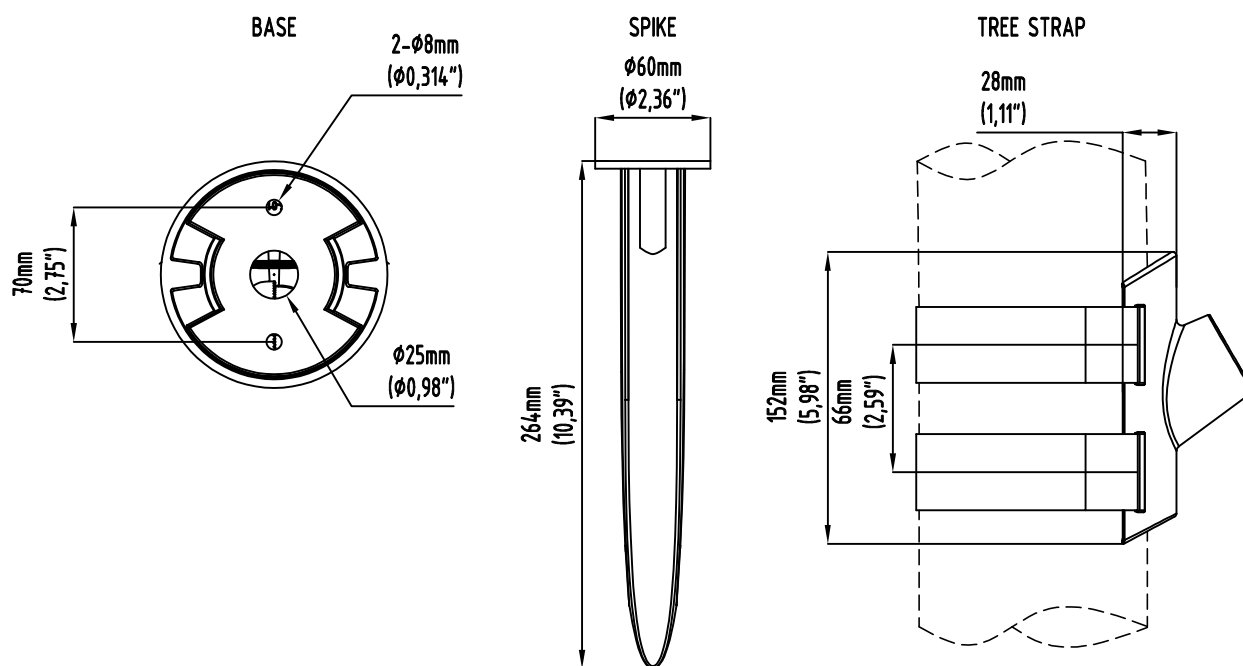
- + BLACK WIRE
- R BROWN WIRE
- G YELLOW/GREEN WIRE
- B BLUE WIRE
- W GRAY WIRE

### NOTE:

WHERE LUMINAIRE IS DELIVERED WITH CONNECTING LEADS AND WITHOUT A MEANS OF CONNECTION TO THE POWER SUPPLY TERMINAL BLOCKS MAY BE USED (TERMINAL BLOCKS NOT SUPPLIED BY MANUFACTURER). TERMINAL BLOCKS SHALL BE IN THE SAME IP RATING AS THE LUMINAIRE ITSELF, WITH RATED VOLTAGE OF MIN. 400 V AND RATED CONNECTION CAPACITY OF 10A. CONNECTION WIRE ENDS COMING FROM POWER SUPPLY TO BE PREPARED AS TERMINAL BLOCK MANUFACTURER RECOMMENDS. TERMINAL BLOCK SHOULD BE PLACED IN A LOCATION WHERE IT DOESN'T NOT AFFECT THE LUMINAIRE OPERATION.

## FIXTURE DIMENSIONS

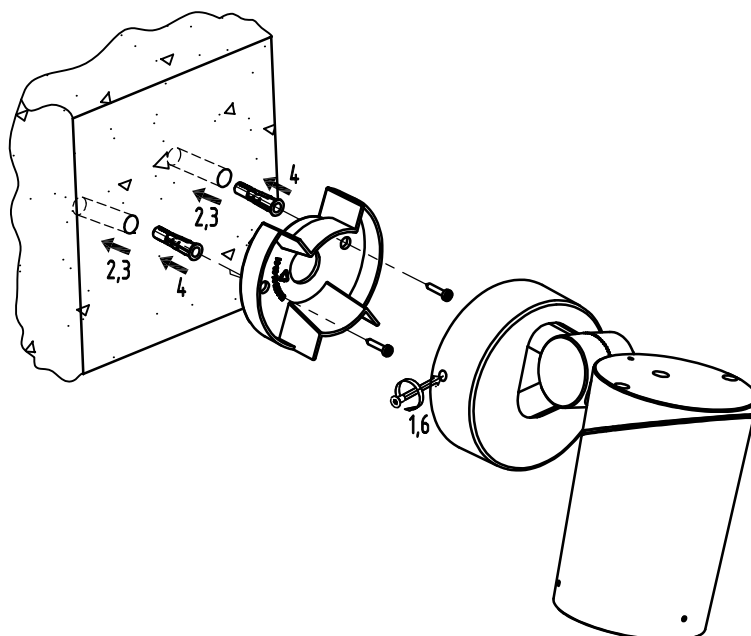




## INSTALLATION GUIDE

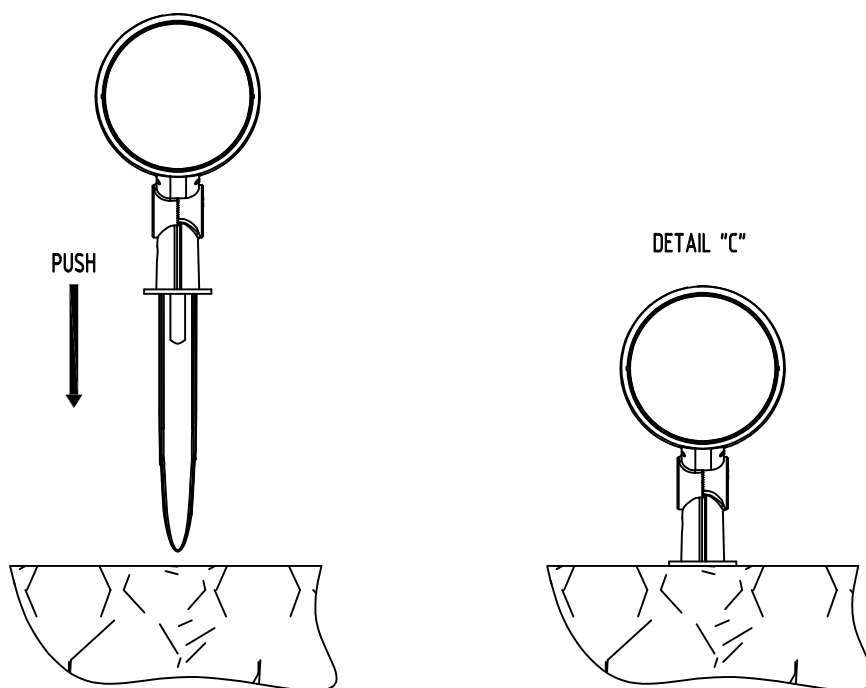
### FIXTURE INSTALLATION

1. REMOVE THE BOTTOM HOLDER AND KEEP THE SCREWS FOR REASSEMBLY IN STEP 6
2. MARK THE POSITIONS FOR THE MOUNTING HOLES (SCREW  $\phi 4\text{mm}$ (0,16") x 2)
3. DRILL THE HOLES AT THE MARKED POSITION
4. INSERT WALL ANCHORS AND FASTEN THE HOLDER USING SCREWS (ANCHORS AND SCREWS ARE NOT SUPPLIED BY THE MANUFACTURER)
5. CONNECT THE FIXTURE WIRES TO THE SUPPLY CABLE IN ACCORDANCE WITH LOCAL REGULATIONS
6. REASSEMBLE THE BOTTOM HOLDER USING THE SCREWS SAVED IN STEP 1



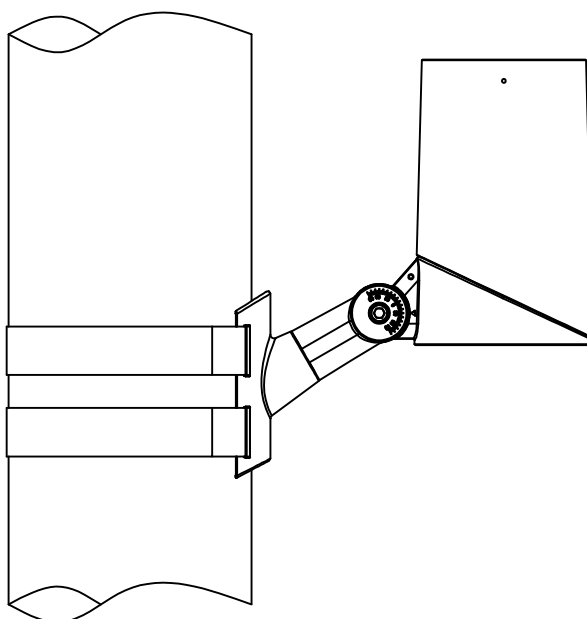
## SPIKE INSTALLATION

1. PUSH THE LIGHTING FIXTURE IN TO THE GROUND (SEE DETAIL "C") UNTIL THE SPIKE IS NOT VISIBLE ANY MORE
2. CONNECT THE FIXTURE WIRES WITH SUPPLY CABLE



## TREE STRAP INSTALLATION

1. MOUNT THE FIXTURE AND TIGHTEN IT WITH STRAP ON A POLE
2. CONNECT THE FIXTURE WIRES WITH SUPPLY CABLE



## TILT ADJUSTMENT

### FIXTURE INSTALLATION

1. SLIGHTLY LOOSEN THE ADJUSTMENT SCREW USING THE APPROPRIATE TOOL
2. CAREFULLY SET THE LAMP TO THE DESIRED ANGLE
3. ONCE PROPERLY ALIGNED, SECURELY TIGHTEN THE ADJUSTMENT SCREW TO LOCK THE LAMP IN PLACE

